

CASSONE

YOUR SOURCE FOR SPACE

SIGNATURE SALES SERIES

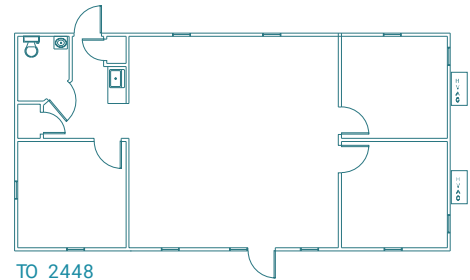
TO 24' X 48'



FEATURES

TEXTURED WOOD EXTERIOR
WOOD TRIM ON ALL WINDOWS AND DOORS
CARPETING
RECESSED LIGHTING
VINYL COVERED GYPSUM WALLS
GLASS STOREFRONT OR 15 LITE FRENCH STYLE DOORS
CENTRAL AIR CONDITIONING / DUCTED HEAT

DESCRIPTION: Double wide signatures series available with half bath or half bath and kitchenette area, 3 or 4, 12 ft. private offices with display area.



CUSTOMER APPROVAL

Signature: _____
Date: _____
Print Name: _____

1-800-640-8844 / 631-585-7800 / FAX 631-585-7895
1900 LAKELAND AVE. RONKONKOMA, NY 11779
WWW.CASSONE.COM / INFO@CASSONE.COM / WBE CERTIFIED